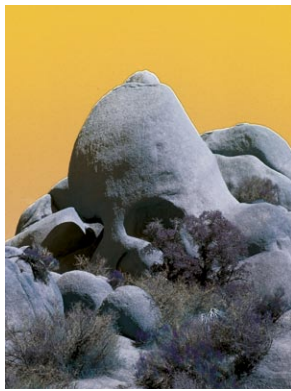




120°



225°



Three Aspects of Skull Rock

Left: 330°

Below: The Formation Behind Skull Rock

INTERPRETIVE TAXONOMY FOR THE CALIFORNIA ORIENTE IN THE VICINITY OF JOSHUA TREE



SLEEPING INDIAN

The form of a woman in repose is visible in the contours of these hills within the military base at 29 Palms. The figure was formed during two decades of directing live fire ordnance for defense training. It is only recognizable from points within the restricted zones of the military base. It is considered to be the largest sculpture ever made.



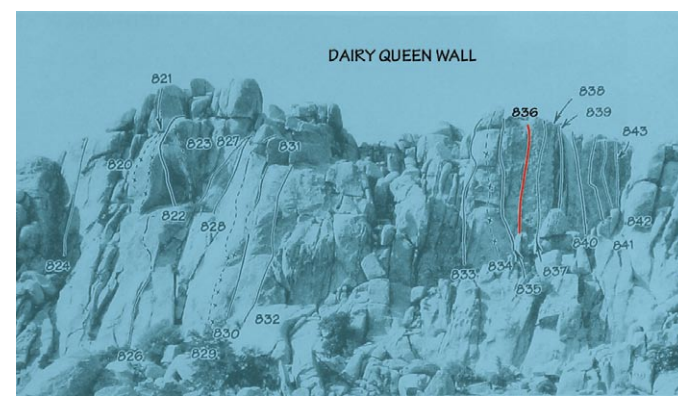
SAND GLACIERS

These unusual features are the result of prevailing winds transporting decomposed rock to the windward escarpment of the Sheephole Mountains at the far eastern end of the Morongo Valley. The formations advance imperceptively up the mountain slopes.



BATH

This naturally occurring oasis is one of only a few in the region. It has recently been colonized by the Northwesternmost known population of Africanized Honeybees.

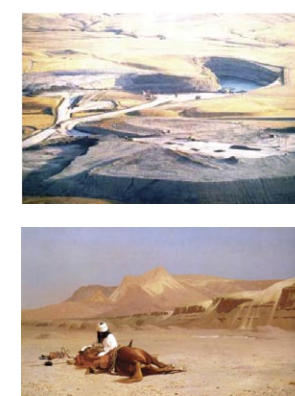


Left: 836 Frosty Cone 5.7

The Site of an Accident



Right: BAIN MAURE J.L. Gerome



Open Pit Mine With Water Collecting in the Basin

North Africa in the Nineteenth Century

Right: 34° 07' 43" N -115° 40' 57" W

- Various, Ground holes
- Depressions
- Mounds
- Elevated Holes
- Modified Shelters



Nomenclature Progression:

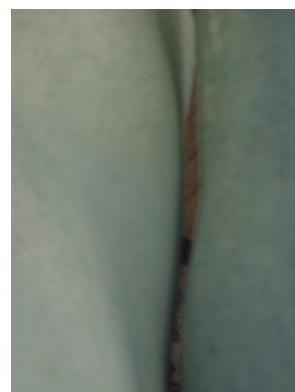
Seam



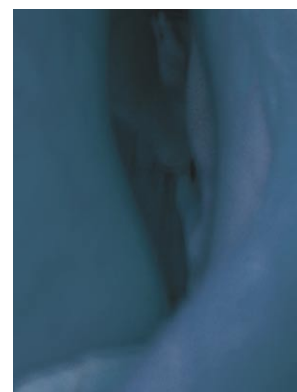
Crack



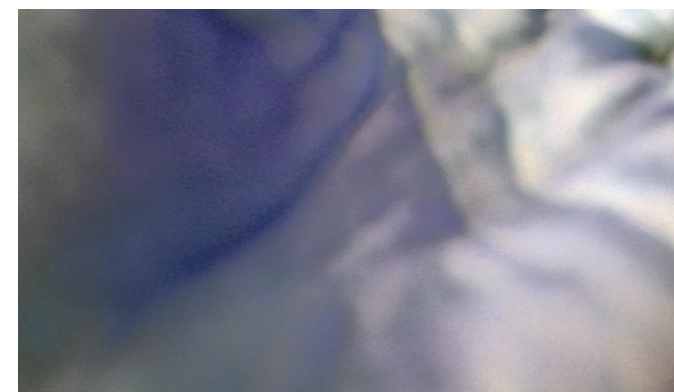
Off-Width



Chimney



Canyon



Climber's Chalk Marks Indicating:

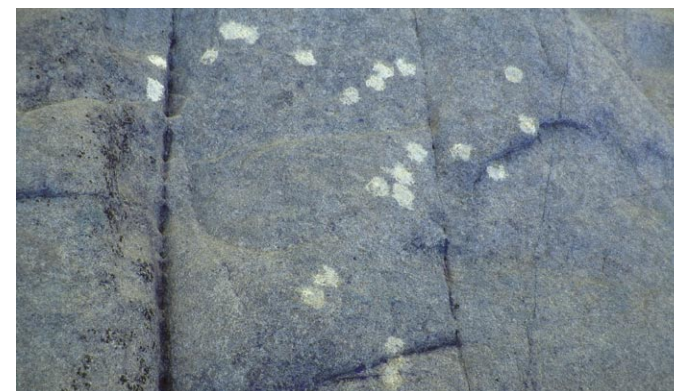
Crater (Tarantula)



The Chart to a Source



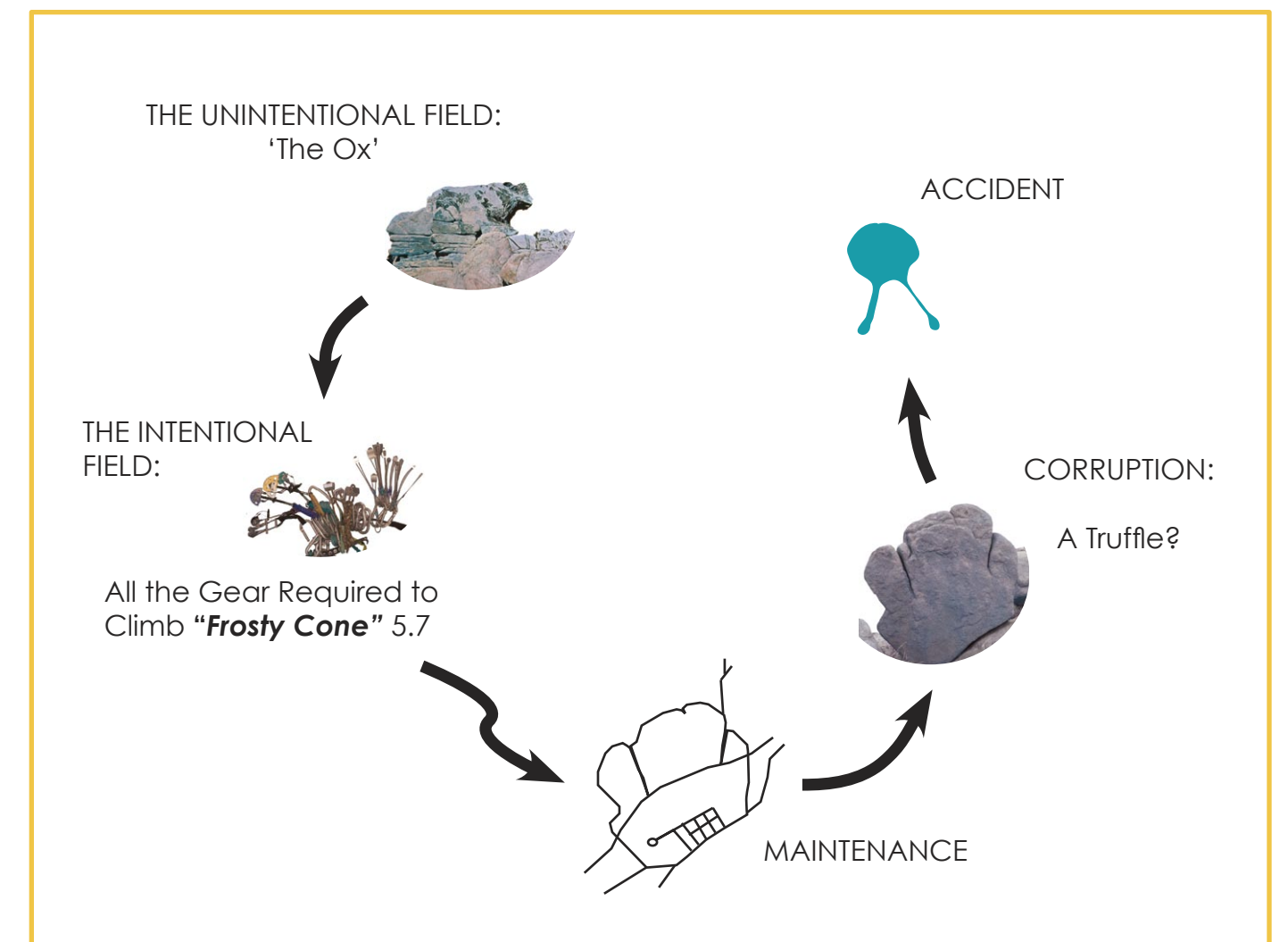
The Celestial River (a Nasal Drip)



The Distribution of Oases



Cairn



PLAN OF THE REGION

